

Sigrand SG-16S
G.SHDSL modem with Serial interface

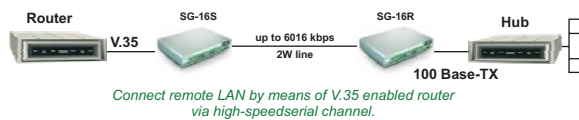
SG-16S



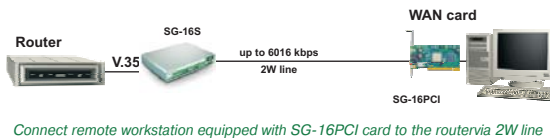
- Up to 6 Mbps via 2W line** — this is the only modem allowing so high data rates via 2W line
- Ease of installation** — configuring modem either by DIP switches or by terminal program through RS-232 port
- Reliable operation on noisy lines** — comparing to other modems it has been tested by many customers in real life
- Reach up to 11 km** — this feature allows to connect remote peers through 24 AWG cabling without additional regenerators
- Feature several services through the same line** — optional interface moves the Sigrand SG-16B modems into another class of equipment as integrated access devices
- Optimal data rate** — feature of automatic data rate adjusting, data rate step 64 kbps if configuring by terminal program
- Compatibility** — it is compatible with equipment of other vendors which complies with "Ethernet-over-DSL" standard
- High reliability** — 5 years of warranty, 100% pre-sale live quality checking
- High service level** — prompt technical support, wide dealer network

Examples of SG-16S applications

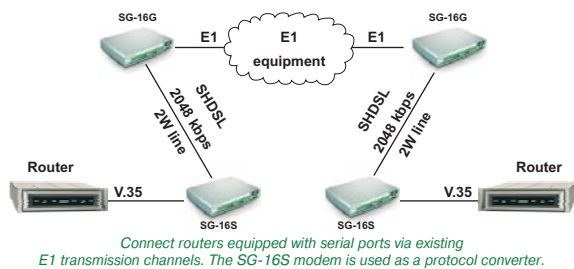
Connect remote LAN and router via V.35



Connect remote workstation equipped with SG-16PCI card to the router



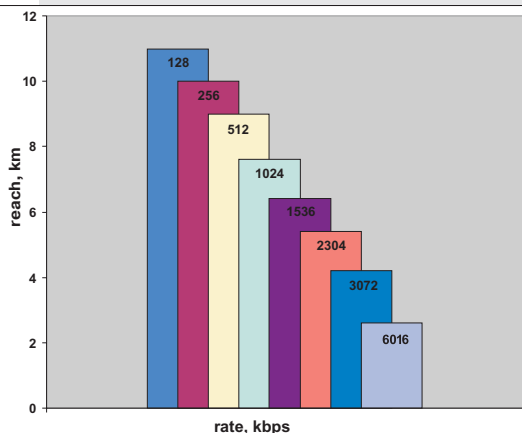
Using of existing E1 networks to connect routers via V.35



See full list of applications in the special document SG-16 "Select your solution!".

SG-16 modems feature unsurpassed line rate, faster than rivals ever do!

Data rate and reach of SG-16 modems



OPTIONS OF SG-16 MODEMS WITH E1 INTERFACE FOR INTEGRATED ACCESS DEVICES

You need no additional telecommunication equipment and extra wires anymore!

Optional interface moves the **Sigrand SG-16S** modems into another class of equipment as integrated access devices.

Вместе с подключением локальной сети филиала через интерфейс Ethernet, можно подключить дополнительное оборудование филиала.

Featuring 2 services through the same wire simultaneously:

- **Bridge model**

SG-16BS: Ethernet + serial - позволяет объединять локальные сети удаленных филиалов и подключать устройства с последовательным интерфейсом (например, банкоматы и POS-терминалы) по одной физической линии

- **Router model**

SG-16RS: Ethernet + serial

The Sigrand **SG-16S** modem is the state-of-the-art of G.SHDSL technology. It can connect serial-port enabled equipment (routers, ATMs and POS-terminals). It makes use dedicated 2W copper lines.

The **SG-16S** is the modem featuring general-purpose synchronous/asynchronous interface. It also is available as desktop model.

SG-16S features:

Providing of symmetric throughput via one twisted pair in extended data rate range from 64 kbps up to 6016 kbps

General Purpose system interface: V.35, RS-530, RS-449/V.36, X.21, RS-232

synchronous/asynchronous interface (type setup by software)

Firmware update through the terminal port

SG-16S interfaces:

G.SHDSL interface to connect with the remote modem via dedicated 2W copper line

G.SHDSL line interface specifications:

Interface type:	G.SHDSL (ITU-T G.991.2)
Link type:	point-to-point
Wire number:	2 (1 pair)
Data rate range:	64-6016 kbps
Automatic data rate adjusting in the range of	192-2304 kbps
Line coding:	TC-PAM
Transmission type:	full duplex

V.35/RS-530/RS-232 synchronous/asynchronous serial interface:

synchronous/asynchronous mode

Connector type:

Supported interfaces:

DB25 (socket)
V.35, RS-530, RS-449V.36,
X.21, RS-232

Data rate in synchronous mode:

64...6016 kbps with 64 kbps step

Data rate in asynchronous mode (RS-232):

300...230400 kbps

Type and settings of the system interface are selected by means of terminal program commands

RS-232 management terminal port

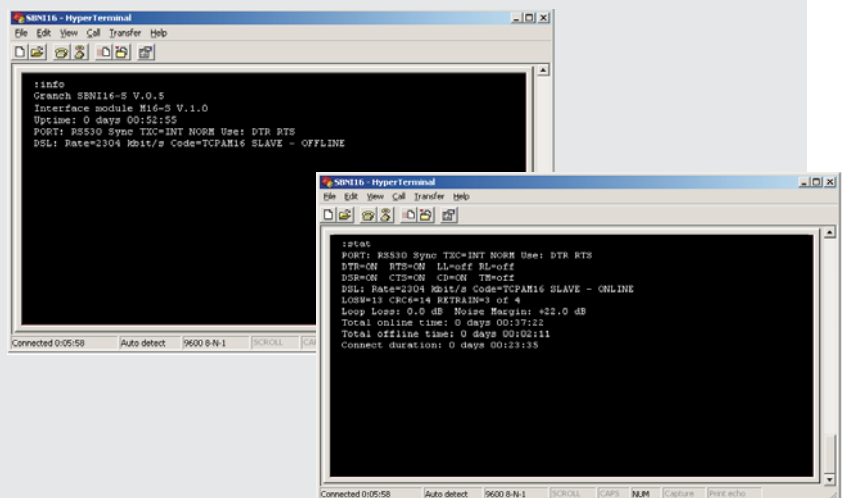
Management software allows:

Define operation modes for each interface

Collect statistics for each interface

Make use test mode to determine error rate of the line

Do configuring of the remote modem



Special and bonus programs

Marketing support

Special program for buyers

Cumulative discounts, gifts

Upgrade Test-drive

Lottery for modem serial numbers every year